



SUBLIME VIEWS FROM EVERY ROOM

FOR SALE

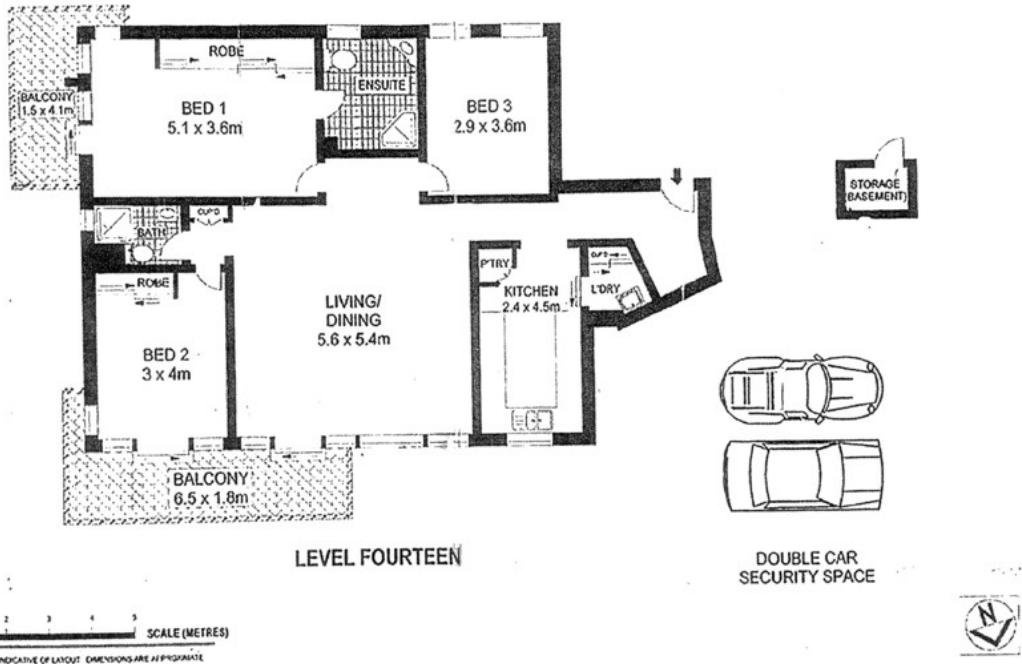
Capturing panoramic views across the sparkling harbour and over to Manly, this spacious (123 sqm approx.) apartment is positioned on the 14th floor of prestigious Hopewood Gardens.

This is an opportunity to capitalise and add value to a world class location. Positioned minutes from ferry/bus transport and local shops and with easy access to the Edgecliff Centre, Double Bay village and the CBD.

- + Lift access to easy level living
- + Light-filled open plan living and dining
- + Three generous bedrooms with b/ins
- + Two ensuite bathrooms, second with sep bath & shower
- + 2 secure car spaces plus ample visitor parking
- + Pool, gym, sauna, landscaped gardens
- + Moments to Edgecliff Centre and Double Bay village
- + Close proximity to bus, ferry and CBD transport

Amenities

- 2 Garage



LEVEL FOURTEEN

DOUBLE CAR SECURITY SPACE

14C/13 THORNTON STREET

DARLING POINT

