



HOLDING DEPOSIT RECEIVED

\$1,950 per week

PRESTIGIOUS WATERFRONT APARTMENT

Offering captivating harbour views, a superb waterfront lifestyle awaits at this spacious apartment. Embracing its northerly aspect with excellent indoor/outdoor connection, open plan living spaces feature expansive windows and full-height stacker doors to capture the outlook. The generous kitchen has plenty of storage and servery overlooking the living spaces.

This prestigious waterfront security block's further offers its residents access to fabulous waterfront gardens, sparkling sun-soaked pool and direct access to the iconic harbour. Located just a short walk to McKell Park ferry wharf, providing easy access to the CBD.

Property features:

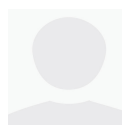
- Newly painted and carpeted throughout
- Open living/dining with expansive windows capturing harbour views
- Full-height stacker doors to balcony for airy waterfront living
- Spacious granite kitchen with good storage
- Security building, lift access, access to waterfront gardens and swimming pool
- NO PETS

To apply, visit <https://t-app.com.au/lbdb>



Brendan Peters
Executive Leasing
Consultant

Laing+Simmons Double Bay
brendan.peters@lsre.com.au
0490 215 154
02 9327 7976



Jessica Rogers

Laing+Simmons Double Bay
leasing@lsdbpm.com.au

Amenities

- 2 Garage

