



Family Home, Renovated in Central Location

\$850 Per Week

Please Contact Abrielle on 0450 202 921 to organise a private appointment.

Solid full brick and tile original cottage that has just received a refreshing renovation allowing the property to subtly blend both old and new worlds together.

Set within walking distance to Westfield Shopping Mall, public transport to City, Chatswood, Manly Beach/Warf and a selection of local public and private schools only a few minutes drive away. All these conveniences plus an array of local beaches only minutes away!

Features include high ceilings, three double bedrooms, living room, sunny north facing renovated kitchen with spacious dining room/sunroom with glass sliding doors that welcome in the back timber deck and grassed backyard, two bathrooms, internal laundry and lock up garage.

Pluses:

- + Three double bedrooms with extra high ceilings.
- + Sunroom/dining room with glass sliding doors leading to back timber deck and sunny grassed backyard.
- + Renovated kitchen with eat-in bench and spacious living area.
- + Two renovated bathrooms main with deep bath, both with showers.
- + Timber floorboards and charming timber windows.
- + Lock up garage, internal laundry and store-room.
- + Directly opposite to Warringah Golf Course.

Move straight in and enjoy the convenient location.

Disclaimer:

We have obtained all information in this document from sources we believe to be reliable; however, we cannot guarantee its accuracy. Prospective tenants are advised to carry out their own investigations.

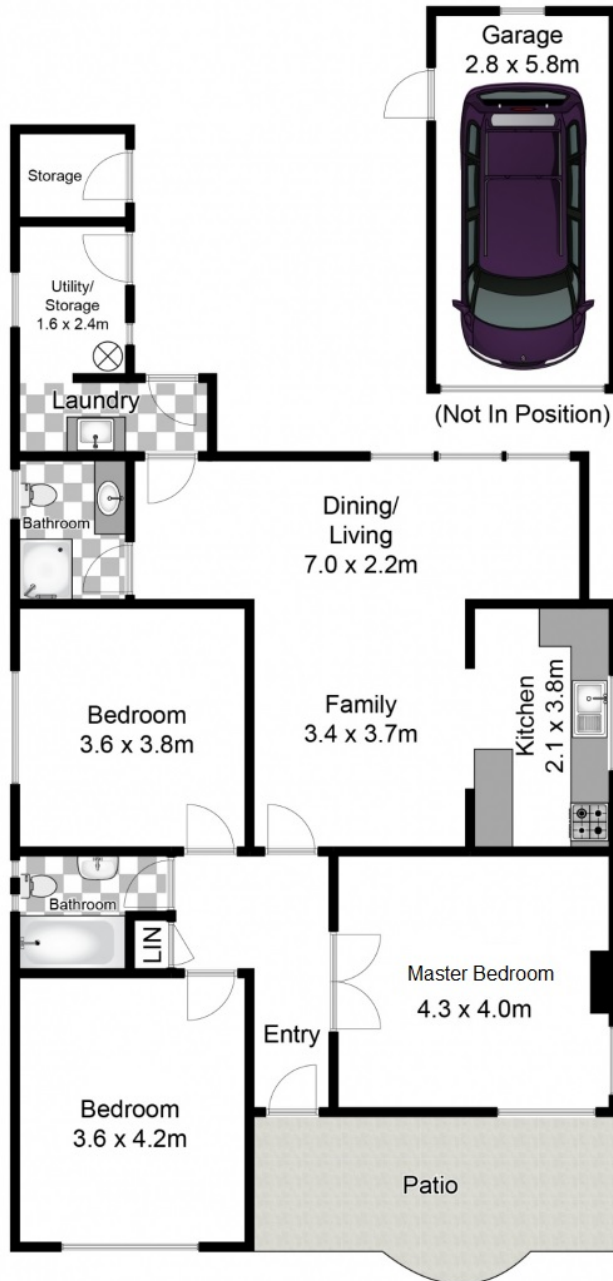


Abrielle Ross
Leasing Officer

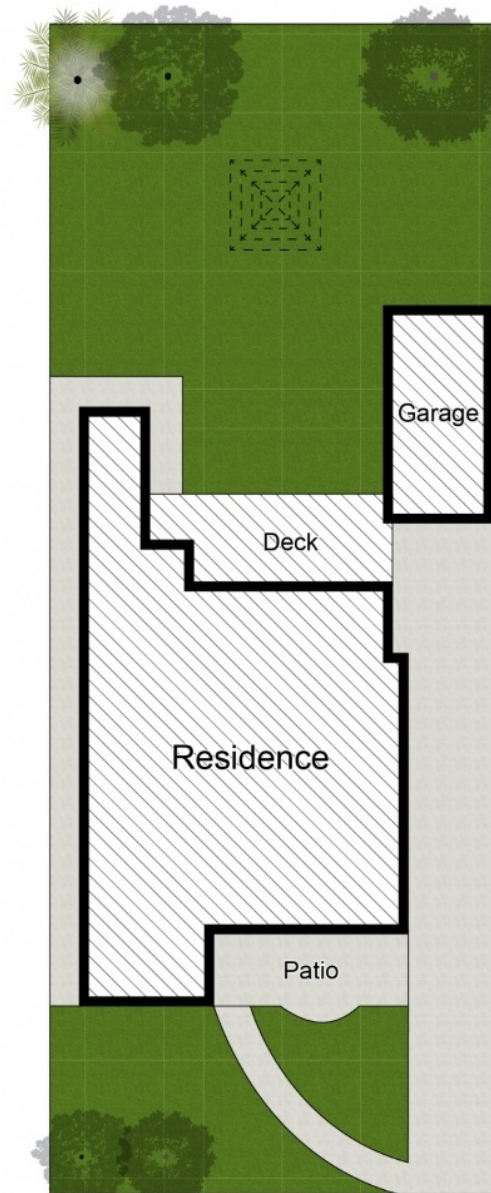
Laing+Simmons Dee Why
abrielle.ross@lsre.com.au
0450 202 921
02 9971 4900

Amenities

- Garage



Ground Floor



Site Plan

Approx House Area 114m²
 Approx Land Area 483m²

Whilst bwrn.com.au has made every attempt to ensure the accuracy of the floor plan contained here, measurements are approximate and no responsibility is taken for any error, omission, or mis-statement. This plan is for illustrative purposes only.



