



IDYLIC HARBOURSIDE LIVING WITH BREATHTAKING PANORAMIC VIEWS, SUNNY NORTH ASPECT AND SECURE PARKING

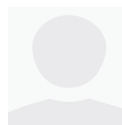
\$795 p/w

Spectacular views across harbourfront parkland and boat-filled Rushcutters Bay to the Opera House, Harbour Bridge, North Sydney CBD and Cremorne Point are the hallmark of this sun-drenched north-facing apartment on level 7 of Glenhurst Gardens', a landmark security building set in extensive grounds with a sunny pool, manicured gardens and secure parking.

Peaceful and private, with wall-to-wall windows framing the views, the apartment features a large living and dining area, modern Caesarstone kitchen, main king-size bedroom, 2nd double bedroom, fully tiled bathroom, separate toilet and concealed laundry. Other appealing features include high ceilings, polished parquet floors, built-in wardrobes in both bedrooms, a secure car space and storage cage.

Offering an idyllic lifestyle moments to the harbour, yacht clubs, Edgecliff and Double Bay, Glenhurst Gardens' has a secure lift lobby, on-site manager and second entrance on Annandale Street.

- + Panoramic harbour views
- + Quiet position w north aspect
- + Spacious living & dining area
- + Modern Caesarstone gas kitchen
- + Stainless steel cooktop & oven
- + Fisher & Paykel dish drawer
- + Main king-size bedroom w b/ins
- + 2nd double bedroom w b/ins
- + Bathroom w separate toilet
- + Concealed laundry w washtub
- + Secure car space; storage cage
- + 200 metres to harbourside park
- + 200 metres to Darling Pt Rd buses



Jack Rex

Laing+Simmons Double Bay
jack@lsdbpm.com.au

Amenities

- Garage

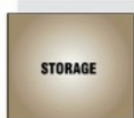
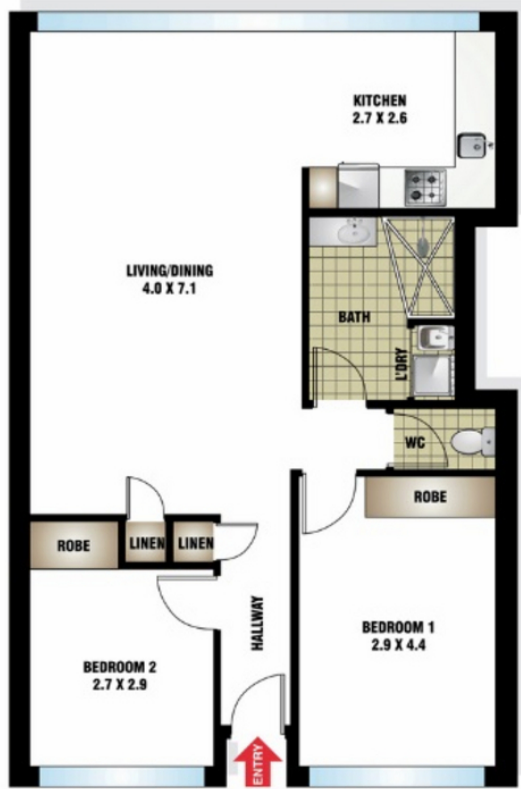
+ 10 minutes walk to Edgecliff trains

STRICTLY NO PETS ALLOWED

To apply, visit <https://t-app.com.au/lldb>

Laing+Simmons

71/11 Yarranabbe Road
DARLING POINT



FLOOR PLAN BY BORTEX PTY LTD PH: 0414 922 679
DIMENSION APPROXIMATE FOR GENERAL INFORMATION ONLY

