



Family Style With A Focus On Easy Living

\$1,310,000

Offering the perfect family package, this attractive brick home's generous accommodation, expansive outdoor areas and great neighbourhood setting all give it excellent lifestyle appeal. Its spacious interiors are freshly presented to provide a relaxed living and entertaining environment where privacy, space and convenience all come together really well. Blend all this with a peaceful location that's close to Carss Bush Park and the waterfront at Kogarah Bay, and it makes an excellent retreat that is ready for immediate enjoyment.

- + Occupying a large 626sqm in a quiet and leafy street position
- + A great family layout features bright open living and dining areas
- + Sheltered entertainment patio overlooking a deep grassed garden
- + Internal access to a generous downstairs rumpus room and study
- + Well-appointed kitchen with breakfast bar, gas fittings and dishwasher
- + All bedrooms are double-sized and include two with large built-in robes
- + Full main bathroom, ensuite plus a laundry and extra WC at the rear
- + Lock-up garage with storage space plus additional driveway parking
- + Easy access to quality schools, city transport and shopping amenities



Bobbi Trajkovski
Partner

Laing+Simmons St George | Carss Park
 bobbi.trajkovski@lsre.com.au
 0412 398 102
 02 8558 0011

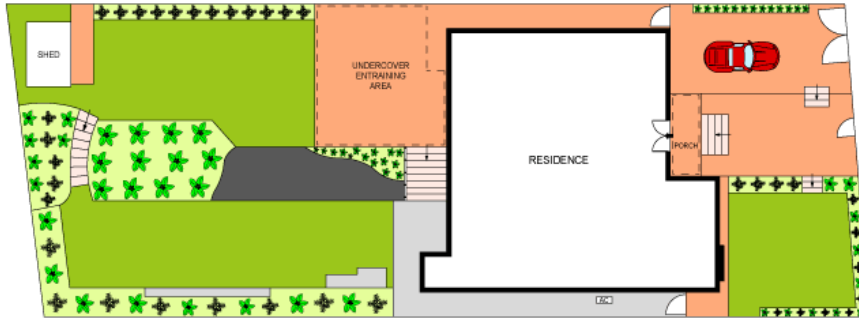


Dimitri Keramea
Partner

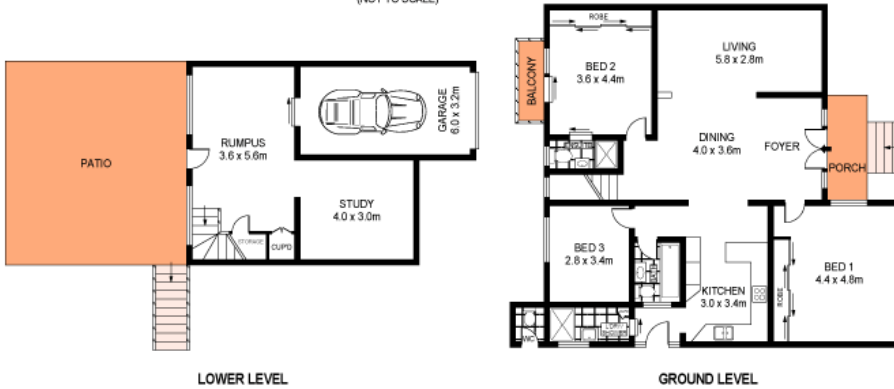
Laing+Simmons St George | Carss Park
 dimitri.keramea@lsre.com.au
 0401 331 397
 02 8558 0029

Amenities

- Garage



SITE PLAN
(NOT TO SCALE)



LOWER LEVEL

GROUND LEVEL



SCALE (METRES)

PLANS SHOWN ONLY INDICATIVE OF LAYOUT. DIMENSIONS ARE APPROXIMATE.
Ref. No: 66551



22 CURRAWANG STREET

CARSS PARK

