



Classic Original Home Backing Reserve

\$1,150,000

Directly backing leafy nature reserve, this classic freestanding home brims with potential on a generously scaled block. Build upon its solid full brick bones and give the home new purpose as a contemporary family residence (STCA). In a quiet and sought-after pocket, it's placed only a short walk from Beverley Park Golf Club, Carlton South Public School and Jubilee Stadium, with St George private and public hospitals and the Kogarah Bay foreshore just minutes away.

- + Flexible single level layout with formal & casual living options
- + Adjoining kitchen, living & dining areas with floorboards
- + Lounge room or fourth bedroom opening to the front porch
- + Alfresco area with grassy patch & foundations for veggie gardens
- + Long side driveway leads through to a detached triple car garage
- + Tightly held family home, first time offered in over 30 years
- + Substantial 670sqm land offers great value block for location
- + Be inspired by contemporary neighbouring designs & rebuild (STCA)



Andrew Stefanovski
Sales Executive

Laing+Simmons St George | Carss Park
andrew.stefanovski@lsre.com.au
0404 180 351
02 8558 0000

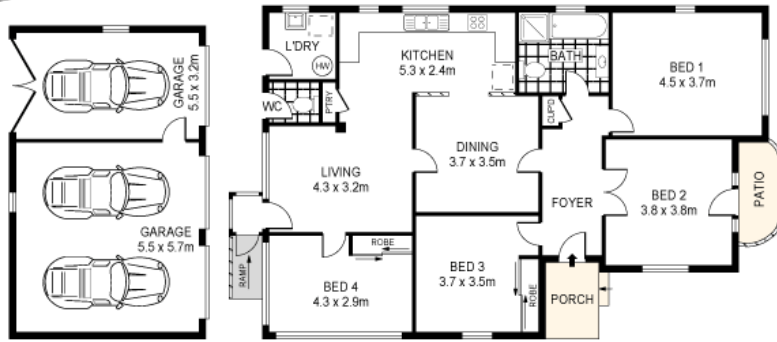


John Kastellorios
Partner

Laing+Simmons St George | Carss Park
john.kastellorios@lsre.com.au
0404 019 860
02 8558 0055

Amenities

- 3 Garage



0 1 2 3 4 5
SCALE (METRES)

PLANS SHOWN ONLY INDICATIVE OF LAYOUT. DIMENSIONS ARE APPROXIMATE.
Ref. No. 66263



29 HARSLETT CRESCENT

BEVERLEY PARK

