

**Sold by Laing + Simmons Miranda - Generous Contemporary Apartment**

\$740,000

Enjoying generous updated interiors, park like surrounds and a private east facing aspect, the apartment provides house sized living while only being a short stroll to central Miranda.

The formal entrance foyer leads through to an open plan living and separate dining area with floating timber floors throughout. A modern fully appointed kitchen with dishwasher complements the living space while the large east facing balcony overlooks the expansive common grounds and gardens.

A huge master bedroom with built-ins has an en-suite, while the other bedrooms are also a generous size. A modern bathroom is complemented by a third toilet in the laundry. With excellent internal storage, there is an oversized tandem garage for two cars. This popular complex enjoys a delightful garden and common area, all in all representing an ideal opportunity to downsize without losing size.

Size: Internal 119sqm, Total 174sqm Est.

- + Private east facing aspect on the top floor
- + Generous interiors and contemporary finishes throughout
- + Floating timber floors and exceptional natural light
- + Open plan living and separate dining area
- + Modern kitchen with updates appliances
- + Large covered balcony for outdoor living
- + Spacious master bedroom with en-suite
- + Two other bedrooms have built-ins
- + Full modern bathroom, separate toilet in the laundry
- + Security tandem lock-up garage, convenient location
- + Built 2000



**Michael Green**  
Licensed Real Estate Agent

Laing+Simmons Miranda  
michael.green@lsre.com.au  
0416 313 838  
02 9524 8477

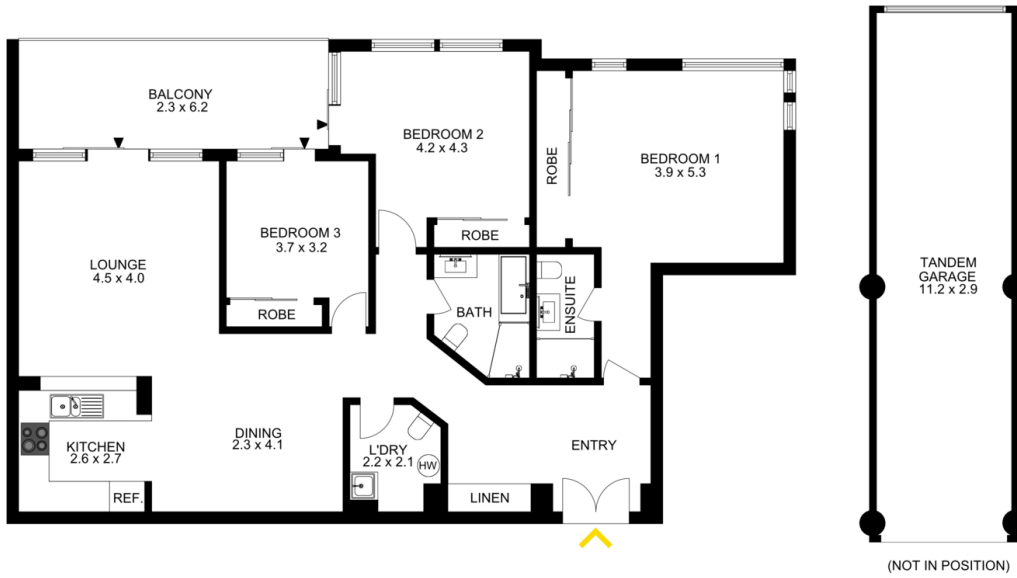


**Peter Green**  
Principal

Laing+Simmons Miranda  
peter.green@lsre.com.au  
0401 145 477  
02 9524 8477

**Amenities**

- 2 Garage
- Intercom



The floor plan is not to scale; measurements are indicative and in metres. Exterior elements are not in position. Plans should not be relied on. Interested parties should make and rely on their own enquiries.

26/36 Wandella Road, Miranda

Laing+Simmons

