

## Beautiful Family Home in Parkside Pocket

Sold

Nestled just 100m from Lionel Bowen Park and Mascot Oval, this solid freestanding home offers an inviting parkside lifestyle. On a substantial 500sqm block, the home spreads over a single level featuring generous room proportions and beautifully presented interiors. Ideally placed for family life, this ultra-handly position offers closeness to schools, Mascot Train Station, Sydney Domestic and International Airports and Botany Road's collection of shops and stores.

- + Granite & timber kitchen features a breakfast bar & gas cooktop
- + Expansive open plan family living area set beside a gas fireplace
- + Period lounge room with timber flooring & sliding glass doors
- + Large paved alfresco area features a powered entertainer's pergola
- + Three large bedrooms with air-conditioning plus a home office
- + Spa bathroom plus dual access ensuite with stone-finish vanities
- + Detached workshop with office plus separate private access studio
- + Side driveway with security fencing offering ample car parking
- + Lovely original details including high ceilings & picture windows



**Chris Skarlatos**  
Principal

Laing+Simmons Rosebery  
chris.skarlatos@lsre.com.au  
0411 402 656  
02 8096 0500

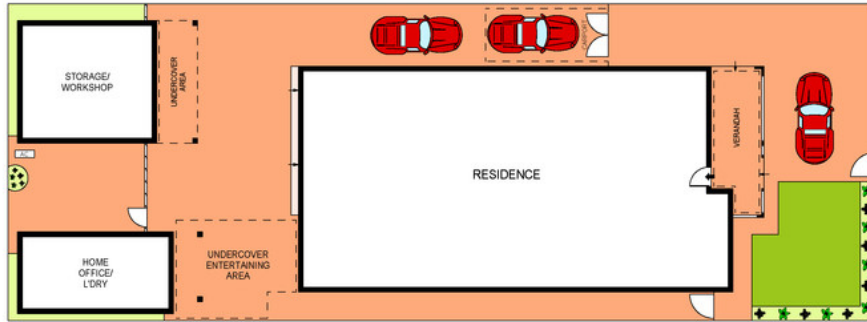


**Kelly Inn**  
Sales Executive

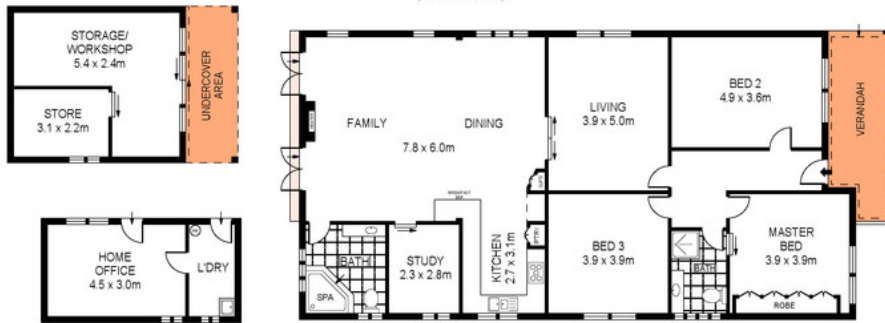
Laing+Simmons Rosebery  
kelly.inn@lsre.com.au  
0490 824 005  
02 8096 0500

### Amenities

- 2 Garage



SITE PLAN  
(NOT TO SCALE)



SCALE (METRES)

PLANS SHOWN ONLY INDICATIVE OF LAYOUT. DIMENSIONS ARE APPROXIMATE.  
Ref. No: 69271



INT : 155m<sup>2</sup>

24 FORSTER STREET

MASCOT

