



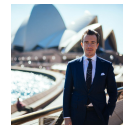
IDEAL FIRST HOME OR SMART INVESTMENT

Sold

Privately located at the rear of the block within one of the Inner West's most cosmopolitan suburbs of Annandale lies this well appointed and low maintenance ground floor two bedroom apartment. 'Johnston Court' captures the essence of village living with ease of access to local shops and amenities.

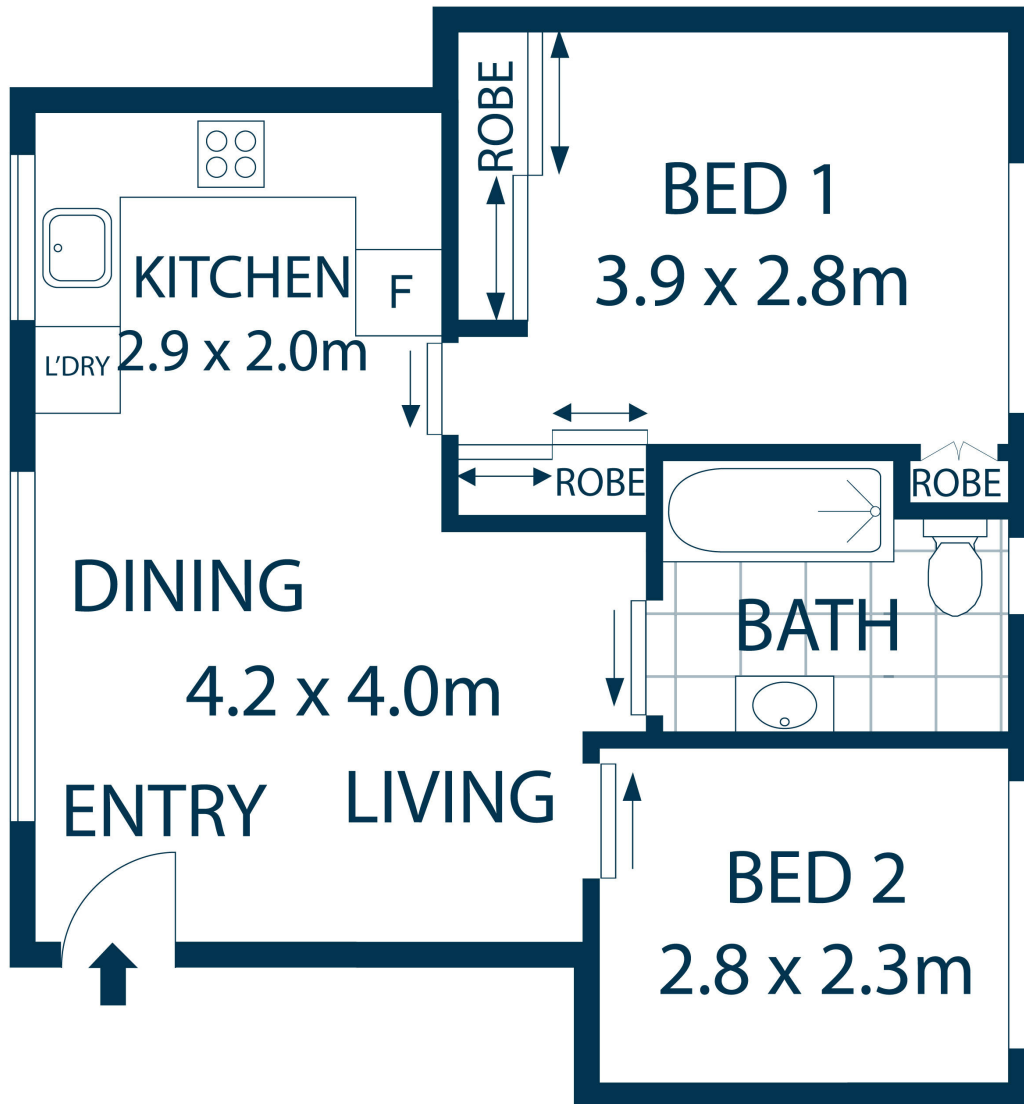
Outgoings: Strata \$407.10 p/q | Council \$273.00 p/q | Water \$178.11 p/q

- Open plan living dining
- Modern kitchen, tiled splash back and stainless appliances
- Spacious master bedroom with built-in wardrobes
- Quiet position at rear of complex, security building
- Ideal entry level purchase or smart investment
- Short stroll to gourmet grocers, Booth street cafes and restaurants
- Close proximity to express bus servicing the City and universities



Dean Applegate
Principal

Laing+Simmons Sydney CBD | Surry Hills
 dean.applegate@lsre.com.au
 0450 316 197
 02 9267 8000



17/19 Johnston Street, Annandale

DISCLAIMER: PLANS SHOWN ARE FOR PRESENTATION PURPOSES AND ARE NOT PART OF ANY LEGAL DOCUMENT. ALL MEASUREMENTS AND FIGURES ARE APPROXIMATE.



Laing+Simmons
CBD | Surry Hills

Property No. 1P0336

