



## Treasured Double Brick Family Home of Luxurious Scale

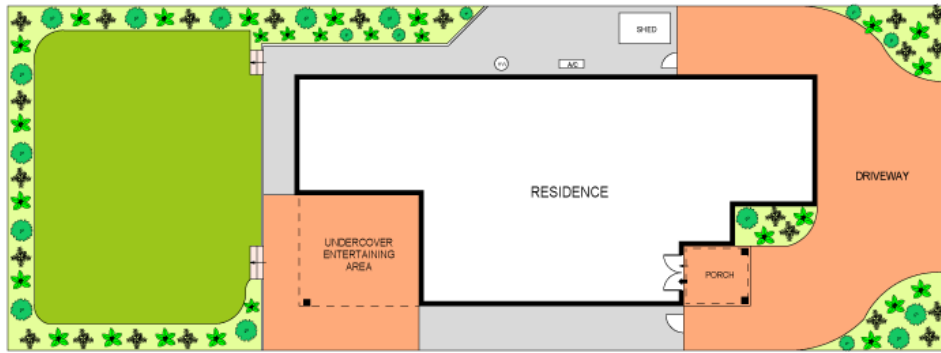
\$1,100 Per week

Designed for spacious living and immaculately presented, this tightly-held home is appointed for a high degree of family comfort. It commands a block of 651sqm set north to rear, combining a voluminous double storey full brick home with an abundance of outdoor space to settle back with loved ones and enjoy the peace and privacy. Beyond its fantastic storage options, the home also appeals with a memorable foyer entry, a formal entertaining area and an immense master retreat. It resides in a sought after street with cafes and buses nearby, while schools, the golf course and Hurstville are easily accessible.

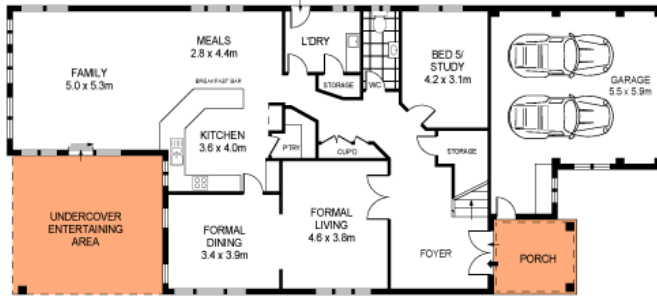
- + Commands a northerly block of 651sqm with a 15.2 metre frontage
- + Vaulted foyer entry with pearl pendants, formal lounge & dining
- + Spacious, light filled casual living area features gourmet kitchen
- + Great kitchen with walk-in pantry & updated stainless appliances
- + Alfresco area overlooks large northerly garden with level lawn
- + Flexible fifth bedroom/office is appointed on the lower level
- + King-sized master retreat with plenty of wardrobes & spa bathroom
- + Gas cooking & heating, zoned air conditioning, security intercom
- + Remote over-sized garage with storage shelves & workbench

### Amenities

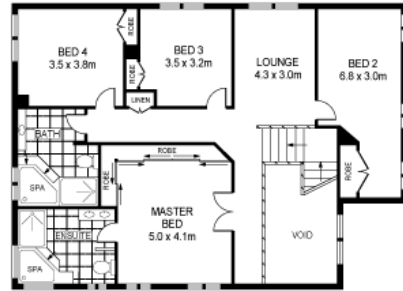
- 2 Garage



SITE PLAN  
(NOT TO SCALE)



GROUND FLOOR



FIRST FLOOR

SCALE (METRES)

PLANS SHOWN ONLY INDICATIVE OF LAYOUT. DIMENSIONS ARE APPROXIMATE.  
Ref. No: 65611



30 PAYTEN STREET

KOGARAH BAY

