



Great Family Home with Northerly Aspect

\$1,200,000

Perfectly positioned in a quiet street in popular Yowie Bay, this much loved, well maintained family home with a solid brick and tile construction sits on the high side of the street with district and bay views.

With a sunny north facing aspect, this home features a formal living room, separate family and dining area, all with air-con. A centrally located fully appointed kitchen overlooks the secure backyard.

There are three good sized bedrooms and a main bathroom with separate toilet, as well as an extra toilet & shower off the downstairs rumpus room. With a secure level backyard there is a covered outdoor patio area, in addition to a large double lock-up garage plus extra storage under the house.

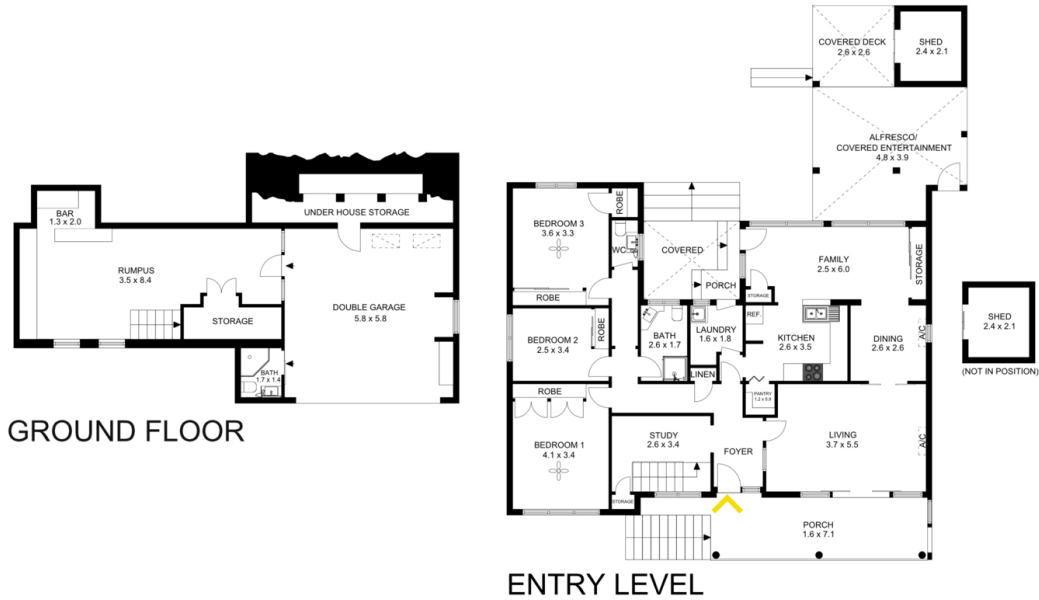
The property makes a wonderful opportunity for both home owners and investors and is close to Westfield, Yowie Bay Primary school, transport and the waterways of the Port Hacking.

RATES: \$510/QTR, WATER: \$190/QTR EST,
Land Size: 556sqm, 17.4m x 31.7m approx.

- + Popular, quiet location, brick and tile home
- + Perfect to live-in now or for future upgrading
- + Elevated north facing position
- + Multiple living areas and dining area all with air-con
- + Well located and light filled kitchen
- + Three good sized bedrooms, main bathroom with separate toilet
- + Secure backyard with a covered outdoor patio area
- + Double auto garage, workshop and bathroom
- + Close to all amenities, schools, shops and waterways

Amenities

- 2 Garage



The floor plan is not to scale; measurements are indicative and in metres. Exterior elements are not in position. Plans should not be relied on. Interested parties should make and rely on their own enquiries.

20 Sherwood Ave, Yowie Bay

Laing+Simmons

