



Ground Floor Unit With 3 Aspects

\$560,000

This well maintained two bedroom unit with 3 aspects offers plenty of light through this open floor plan and is priced to accommodate the first home buyers or astute investors. Situated on the ground floor of a secure building all within close proximity to useful amenities. This one is not to be missed.

Features include

- 2 large bedrooms, main with built in robes
- Fully tiled and updated bathroom with bath and shower
- Updated Kitchen with electric cooking and mass amounts of storage space
- Light filled open plan living and dining with split system A/C
- An entertainers sized balcony with access to back lawn
- Internal laundry
- Large Single lock up garage for car and storage
- Close to Parramatta East Public school, St Patricks, the Kings School & Western Sydney University
- Bus stops close by taking you straight to Parramatta CBD, train station and Eat street
- Across from Richie Benaud Oval
- Walk to local village shops
- Total size 127m2 (102m2 internal)

Looking for finance approval ? We can help you.



Daniel Mourad
Sales Executive

Laing+Simmons Parramatta
daniel.mourad@lsre.com.au
 0416 229 175
 02 9635 4000

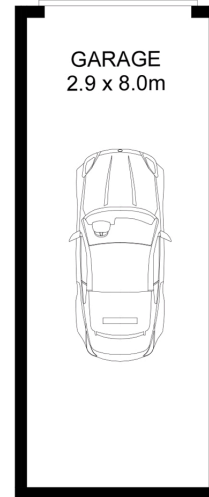


Laing + Simmons
Parramatta

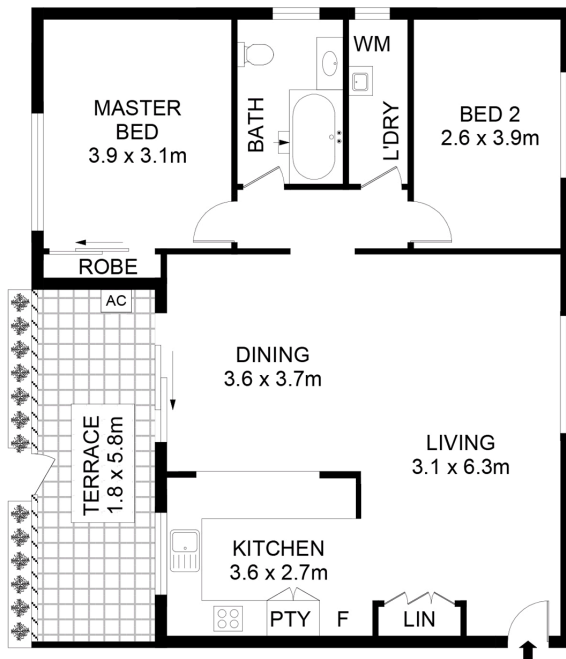
Amenities

- Garage

9/12 Bellevue Street North Parramatta



GROUND LEVEL



GROUND LEVEL

DISCLAIMER
DIMENSIONS ARE APPROXIMATE AND SHOULD ONLY BE USED AS A GUIDE
THEY ARE NOT TO SCALE AND NO LIABILITY WILL BE ACCEPTED

