



Classic Original Home Backing Todd Park

\$1,260,000

This long treasured parkside residence offers an exceptional opportunity directly backing Todd Park and embraced by tranquil natural bushland surrounds. Freestanding and solid, the home comprises an easy single level floor plan featuring multiple living areas. Neat and tidy, there's plenty of potential to enhance the home for the modern family lifestyle. Stroll through the back reserve to Carss Park and the beach, with shops, cafes, Mater Dei Primary and Blakehurst Public all within a walk.

- + Lovingly maintained home offered for the first time in 45 years
- + French doors to the formal living area with period fireplace
- + Large timber kitchen includes a family meals area & gas stove
- + Backyard with private gate access to Todd Park & bush walking trails
- + Three double-sized bedrooms, one includes a built-in wardrobe
- + Fully tiled main bathroom plus combined laundry/second bathroom
- + Lock-up garage plus oversized garden storage shed/workshop
- + Wide frontage, front yard fringed by fragrant rose gardens
- + Freestanding, solid brick home nestled on a level 550sqm block



Dimitri Keramea
Partner

Laing+Simmons St George | Carss Park
 dimitri.keramea@lsre.com.au
 0401 331 397
 02 8558 0029

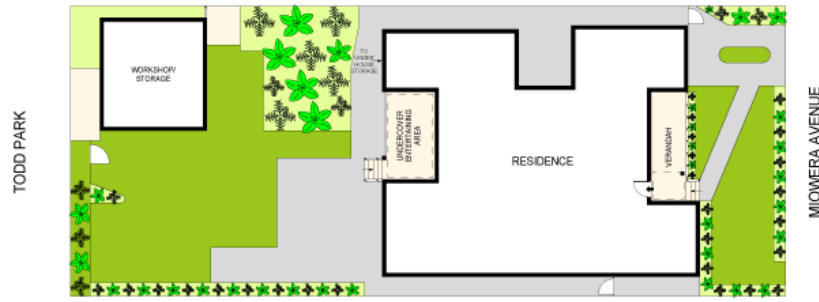


Bobbi Trajkovski
Partner

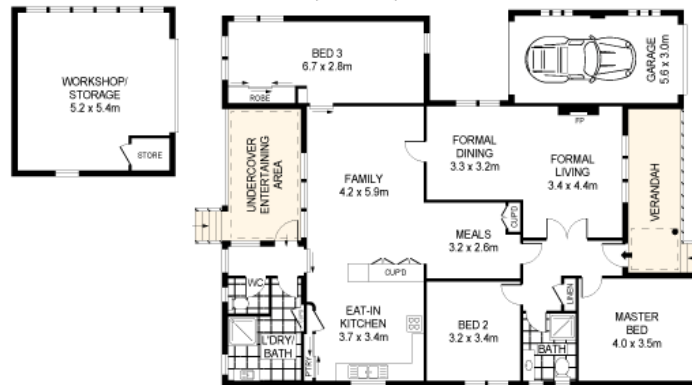
Laing+Simmons St George | Carss Park
 bobbi.trajkovski@lsre.com.au
 0412 398 102
 02 8558 0011

Amenities

- Garage



SITE PLAN
(NOT TO SCALE)



SCALE (METRES)

PLANS SHOWN ONLY INDICATIVE OF LAYOUT. DIMENSIONS ARE APPROXIMATE.
Ref. No. 67464



16 MOWERA AVENUE

CARSS PARK

