

AUCTION SATURDAY 1.30PM ON-SITE

Contact Agent

This stylish apartment is located within the tightly held Anchorage development and holds a commanding street presence. Internally renovated and offering two bedrooms of accommodation with entertainers balcony and an oversized lock up garage.

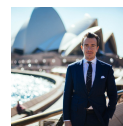
Located at the exclusive peninsula end of Glebe Point, this is an exceptional lifestyle address. The Anchorage is a coveted waterfront reserve building backing onto Blackwattle Bay Park, Glebe Foreshore and is a short walk to the cosmopolitan attractions of Glebe Point Road and transport links servicing the CBD and Inner West.

- + Two spacious bedrooms with built ins.
- + Open plan living and dining
- + Updated kitchen with European appliances
- + Timber floorboards and LED lighting throughout
- + Contemporary bathroom with bath and separate shower
- + Large entertainers balcony
- + Oversized double lock-up garage with storage
- + Security building with intercom access
- + Common pool with views to harbour and Anzac Bridge
- + Walking distance to bus links and light rail



Jordan Mursi

Laing+Simmons Sydney CBD | Surry Hills
 jordan.mursi@lsre.com.au
 0451 654 504
 02 9267 8000

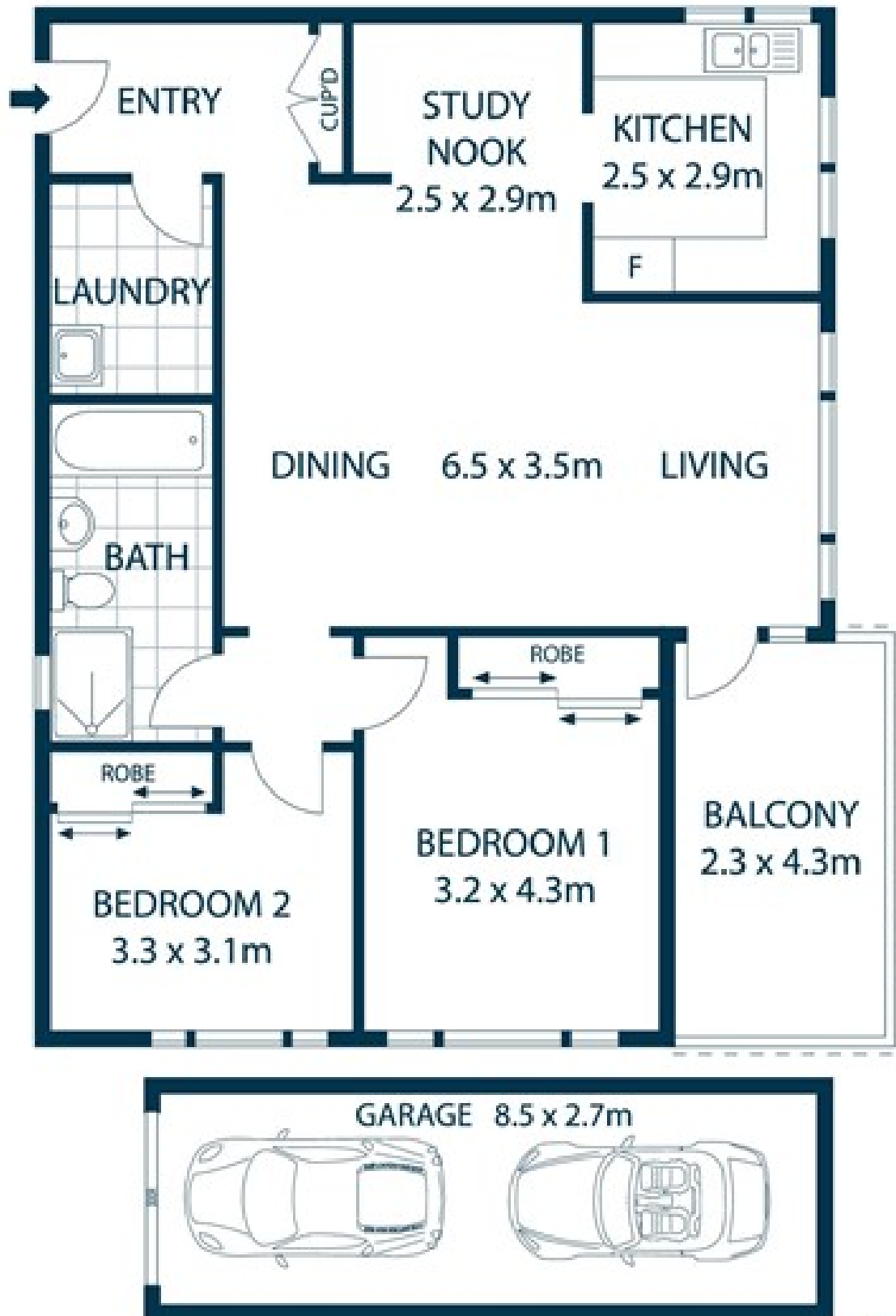


Dean Applegate
Principal

Laing+Simmons Sydney CBD | Surry Hills
 dean.applegate@lsre.com.au
 0450 316 197
 02 9267 8000

Amenities

- 2 Garage



16/451-459 Glebe Point Road, Glebe

DISCLAIMER: PLANS SHOWN ARE FOR PRESENTATION PURPOSES AND ARE NOT PART OF ANY LEGAL DOCUMENT. ALL MEASUREMENTS AND FIGURES ARE APPROXIMATE.



