

Statement of Family Luxury with District Views

SOLD

A vision of contemporary living embellished with fine stone finishes, this prestige home is a remarkable entertainer with additional independent accommodation. High-end appointments feature alongside marble surfaces throughout the internal and external settings, manifesting a theme of continuous luxury with great outdoor integration. Picture perfect and built to impress, every member of the family will adore the quality of their own personal space, including the lucky ones who reside in the poolside accommodation. Set on the high end of the street for a scenic aspect over the district, this fantastic home is a walk to shops, parks and buses and falls within the Bald Face Public School catchment.

- + Architectural triumph is integrated with state-of-the art finishes
- + Indoor and outdoor living spaces take in the leafy district views
- + Luxurious terrace with a sheltered pool, plus a sun deck & garden
- + Kitchen & bathrooms merge premium stone with European fixtures
- + Deluxe kitchen presents a butler's pantry & an espresso machine
- + Five spacious bedrooms feature two suites, both enjoying private balconies
- + Self-contained accommodation with lounge, patio & gas kitchen
- + Gas fireplace plus reverse cycle air conditioning, outdoor shower
- + Double garage plus a number of options for dedicated gymnasium

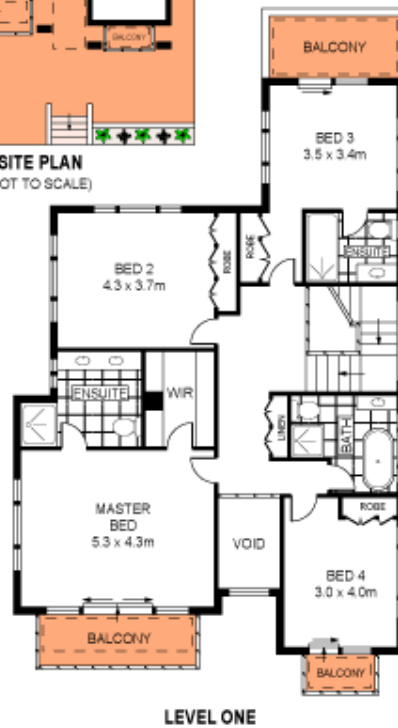
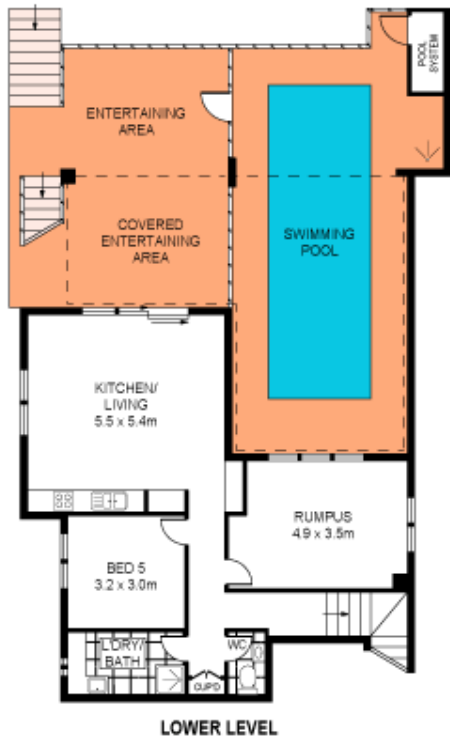
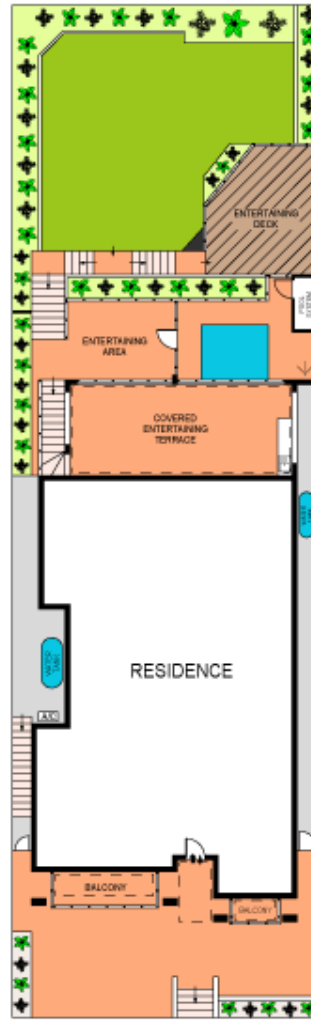
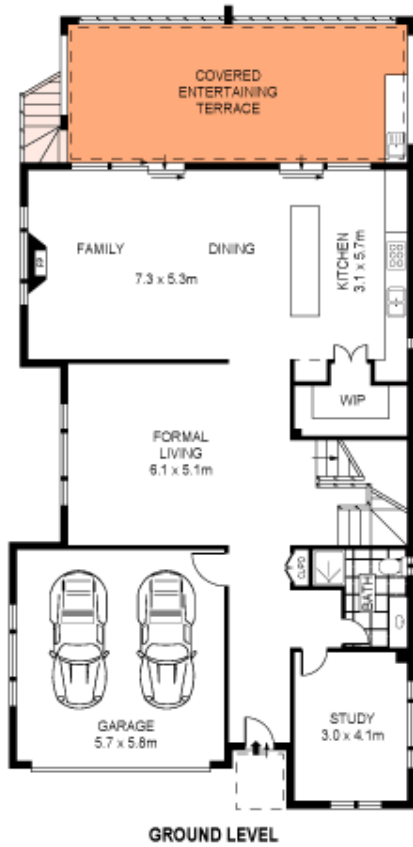


John Kastellorios
Partner

Laing+Simmons St George | Carss Park
 john.kastellorios@lsre.com.au
 0404 019 860
 02 8558 0055

Amenities

- 2 Garage



SCALE (METRES)

PLANS SHOWN ONLY INDICATIVE OF LAYOUT. DIMENSIONS ARE APPROXIMATE.
Ref. No. 64703



