



## Tranquil Apartment Upscaled For Contemporary Living

\$660,000

A strategic choice with a flexible three-bedroom layout, this superb apartment reveals refreshed interiors appealing in serenity, style and easy care comfort. Robust construction is uplifted by a gentle contrast of crisp white walls and timber-toned floors that feature throughout. Quality appointments are infused in the design, which is endowed with a spacious feeling that is amplified by the balcony running the length of the apartment. Set for a seamless transition, this apartment also rewards with quick access to schools, village amenities and transport options.

- + Appealing three-bedroom design that provides 126sqm on title
- + Leafy vistas offer a relaxing backdrop for in/outdoor living zones
- + Updated kitchen presenting stone surfaces & sleek appliances
- + Spacious and bright bedrooms, living area leads to large sunny balcony
- + Air conditioning, gorgeous bathroom with frameless glass shower
- + Established building of low maintenance, double brick construction
- + Lock up garage benefits from extra space for long term storage
- + Jersey Avenue is ideally set between Mortdale & Penshurst Stations
- + Brief stroll to local shops & frequent buses travelling to Hurstville
- + Inspection by appointment

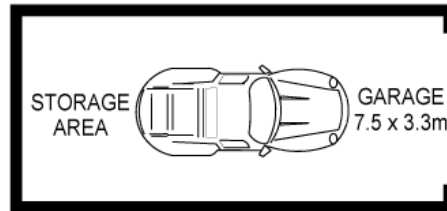
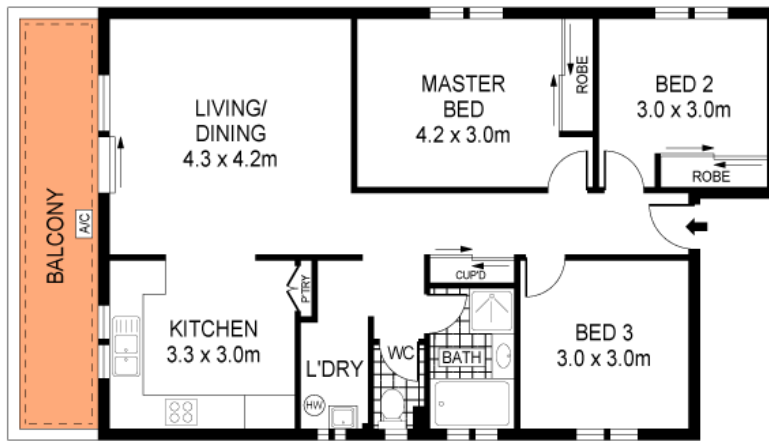


**Dimitri Keramea**  
Partner

Laing+Simmons St George | Carss Park  
dimitri.keramea@lsre.com.au  
0401 331 397  
02 8558 0029

### Amenities

- Garage



PLANS SHOWN ONLY INDICATIVE OF LAYOUT. DIMENSIONS ARE APPROXIMATE.  
Ref. No. 64360



3/48 JERSEY AVENUE

MORTDALE

