

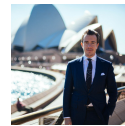
TOP FLOOR APARTMENT WITH CITY VIEWS

Sold

Architecturally designed by Bates Smart and finished to the highest standard, this brand new 2 bedroom apartment is ready to move in and be enjoyed now. Situated in the heart of Erskineville, epitomising the height of fashionable inner-city living, offering style, space, quality and City skyline views.

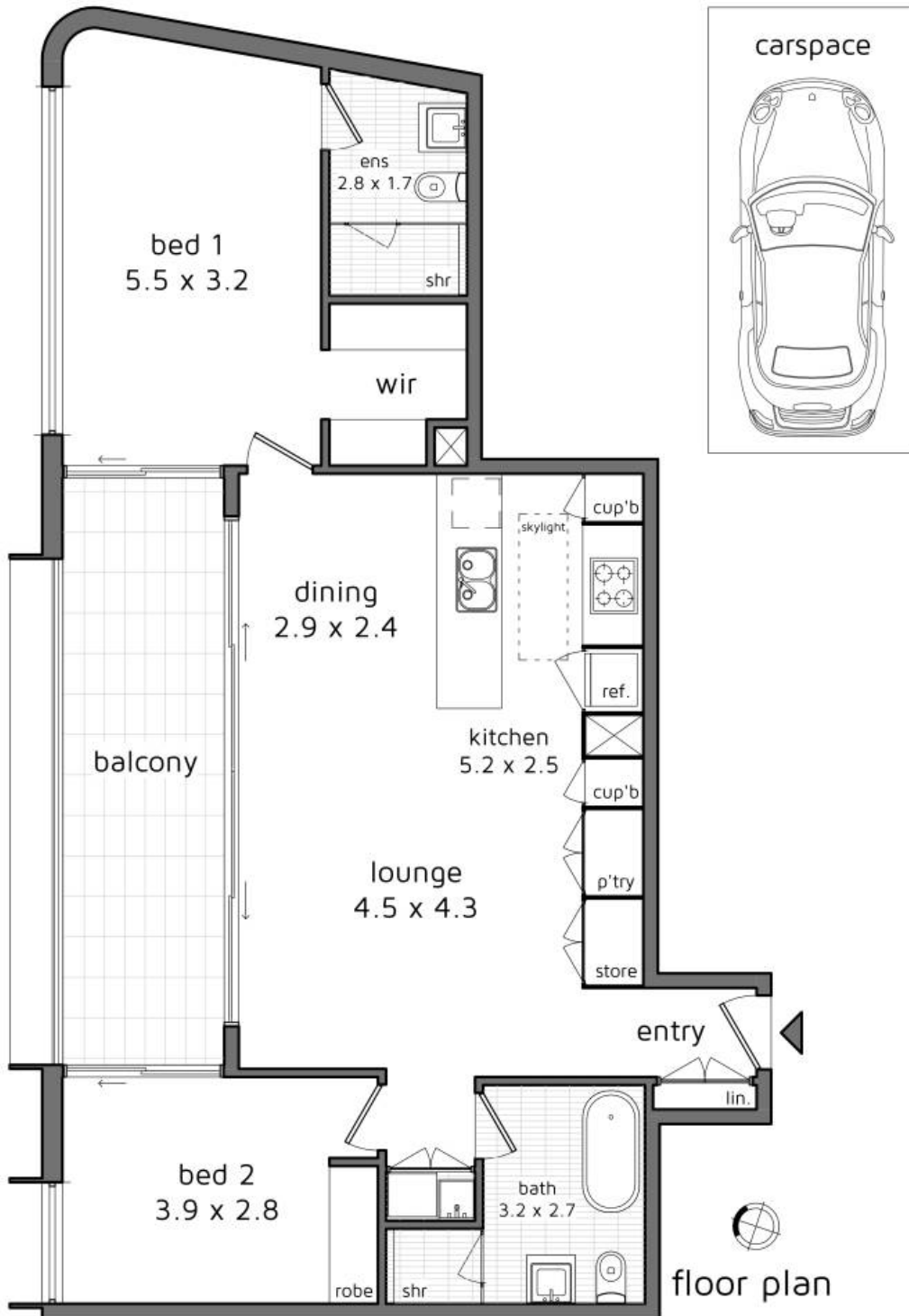
Herringbone laid timber flooring and floor to ceiling glass highlight the expanse of this luxury abode. Stack-able sliding doors tie in the covered balcony which is perfect for indoor outdoor living with a highly desired Northern aspect and City skyline views.

- + Fully tiled bathrooms with stone vanities
- + Air conditioning, Security Intercom
- + Smeg appliances, stone benchtops, ducted rangehood
- + Multiple built ins and storage cupboards
- + 2 full bathrooms, internal laundry with dryer
- + 500m to train station, 4km to CBD
- + Flanked by Newtown and Alexandria
- + City skyline Views
- + Secure off-street car space plus storage cage



Dean Applegate
Principal

Laing+Simmons Sydney CBD | Surry Hills
 dean.applegate@lsre.com.au
 0450 316 197
 02 9267 8000



A812/7 Metters Street, Erskineville

Laing+Simmons
 CBD | Surry Hills
 (02) 9267 8000

This diagram is for illustrative purpose only. All reasonable care has been taken in the preparation, but no warranty is given as to the accuracy of the information. This document does not constitute any part of any offer or contract. Dimensions shown are approximate only. Prospective purchasers must rely on their own enquiries. Floor plan by Igar Nestic 0410981905 / springs.com.au

