



CONTEMPORARY APARTMENT IN PRIME LOCATION

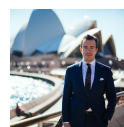
Contact Agent

This well proportioned apartment offers 106sqm of space and is positioned on level 4 with sweeping district views and city skyline glimpses. Recently completed in 2014 and situated in the heart of Redfern, Urba epitomises the height of fashionable inner-city living.

LED downlights, L-shaped kitchen, open plan layout, high ceilings and a light colour palette all highlight the expanse of this contemporary pad. Glass sliding doors tie in the open plan living and balcony which allow for seamless indoor-outdoor living.

Located on the fringe of the CBD, in one of the most vibrant areas in Sydney with a 98/100 walkability score and 100/100 transit score. This is a prime opportunity to reside in one of the area's most exclusive addresses flanked by Surry Hills, Chippendale, and Alexandria.

- + Open plan living, dining and kitchen
- + Sleek kitchen with gas appliances + dishwasher
- + Main bedroom with built ins and en-suite
- + Contemporary bathrooms, concealed internal laundry
- + Full width entertainers balcony
- + Security access, Reverse cycle air con, wired for NBN
- + Rental estimate \$800 per week
- + Opposite Redfern train station
- + Short walk to Sydney CBD, Carriageworks UTS and Sydney Universities



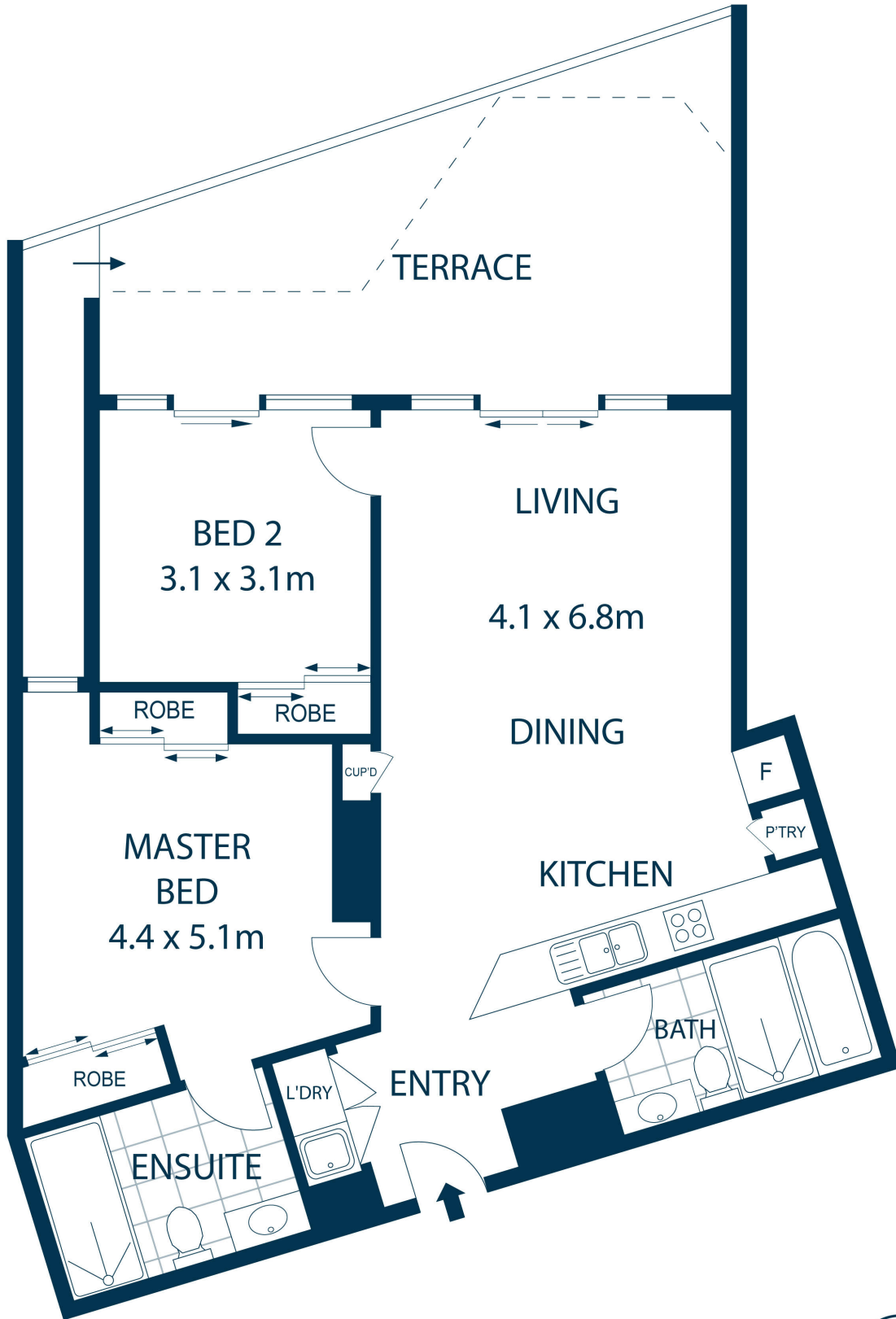
Dean Applegate
Principal

Laing+Simmons Sydney CBD | Surry Hills

dean.applegate@lsre.com.au

0450 316 197

02 9267 8000



403/7-9 Gibbons Street, Redfern

DISCLAIMER: PLANS SHOWN ARE FOR PRESENTATION PURPOSES AND ARE NOT PART OF ANY LEGAL DOCUMENT. ALL MEASUREMENTS AND FIGURES ARE APPROXIMATE.



Laing+Simmons
CBD | Surry Hills

Property No. 1P0247

