



Oversized Terrace Apartment

\$746,550

Perfectly positioned within the immaculately presented Wilshire complex, this oversized two bedroom apartment enjoys generous proportions in a conveniently located and central location.

The oversized living area opens to a generous terrace, ideal for outdoor entertaining and a full sized kitchen provides good storage, gas cooking plus dishwasher. There are floating timber floors throughout the living and bedrooms plus split system air-conditioning.

There are two double bedrooms, both with built ins and fans, the master with full sized ensuite. Easy access to the secure lock up garaging and the complex features indoor pool, and gym facilities. Perfectly positioned for convenient Miranda living, set within moments to shopping, restaurants and public transport. An excellent opportunity to secure an oversized two-bedroom apartment of such proportions.

Strata \$983/qtr | Rates \$260/qtr | Water \$175/qtr est.
Total Size 167sqm | Internal 150sqm approx.

- + Spacious apartment living with generous terrace
- + Open plan living with timber floors and air-con
- + Good sized kitchen with gas cooking and dishwasher
- + Double bedrooms with built-ins and ceiling fans
- + Full main bathroom plus good sized ensuite for main
- + Single auto lock-up garage with storage
- + Walking distance to shops, schools, parks and station
- + Built 1996, 117 units in complex



Michael Green

Licensed Real Estate Agent

Laing+Simmons Miranda
michael.green@lsre.com.au
0416 313 838
02 9524 8477



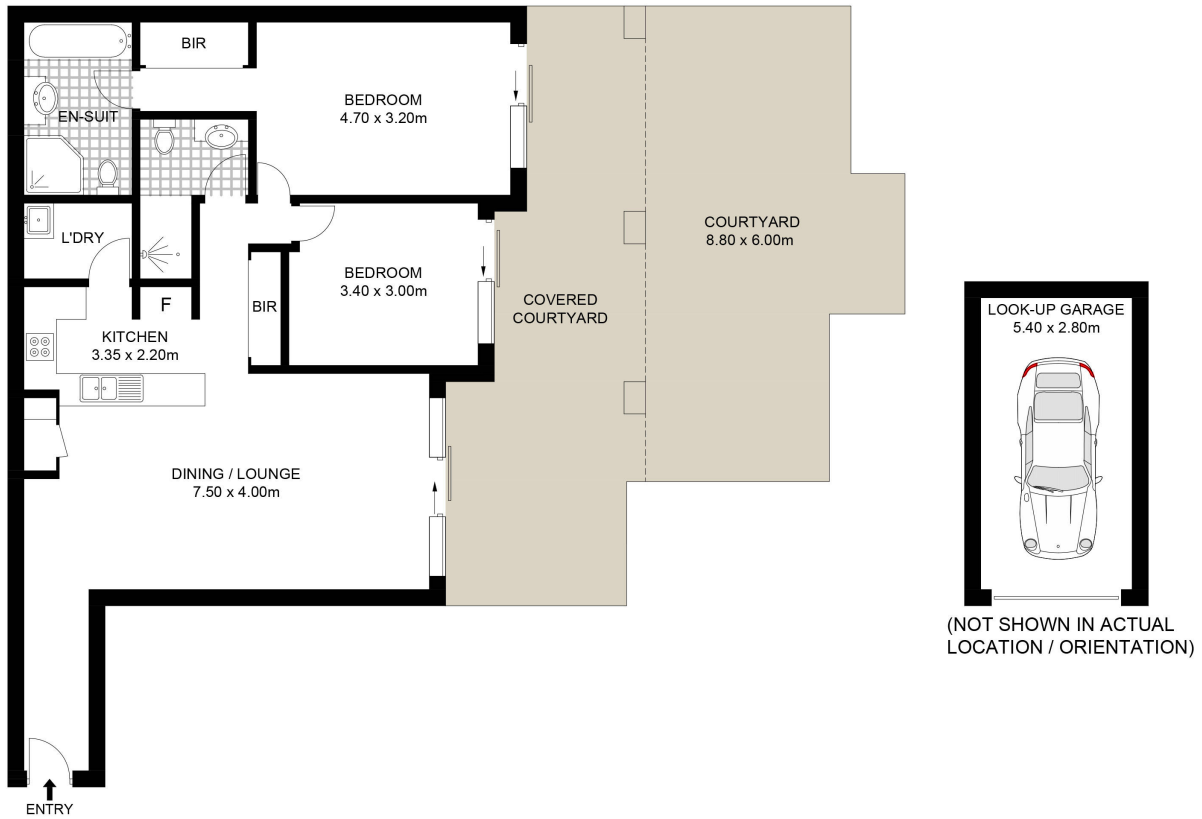
Peter Green

Principal / Licensed Real Estate Agent

Laing+Simmons Miranda
peter.green@lsre.com.au
0401 145 477
02 9524 8477

Amenities

- Garage



Scale in metres. Indicative only. Dimensions are approximate. All information contained herein is gathered from sources we believe to be reliable. However, we cannot guarantee its accuracy and interested persons should rely on their own enquiries. Some images may contain digital furniture.

44/8 Willock Avenue, Miranda

