



Desirable Family Home in Popular Charlestown East

Guide \$775,000

Positioned within the tightly held East side of Charlestown, this fantastic family home or investment is perfectly suited to the current property market.

Maintained to ensure move-in-ready appeal, there is plenty of scope for future enhancements with the versatility of the floor plan. Fit for a family, the design offers a spacious living area seamlessly connected to the updated kitchen, four bedrooms of which three offer built-in wardrobes and a modernised bathroom.

A great option for a teenage retreat or extended family living, the large rumpus area on the lower level is complete with a kitchenette, bathroom and laundry adjoining a single lock up garage. The undercover patio offers a fantastic area for entertaining, overlooking the established backyard. The lower level also lends itself to being used as a self-contained flat,

Conveniently located close to Charlestown Square, preferred primary and secondary schools, sports ovals and public transport resources, this home is sure to impress.

- Fantastic family home or investment in popular East Charlestown cul-de-sac location
- Updated throughout with scope to enhance
- Open plan living with split system air-con
- Modern kitchen with gas cooktop & ample cabinetry space
- 4 bedrooms; 3 include built-in robes
- Modern family-sized bathroom
- Outdoor entertaining patio
- Lower level rumpus, full kitchenette, laundry & bathroom
- 19,000L water tank, solar-power system
- 2.4Kw Elec. Solar panels
- Ceiling fans throughout



Luke Searles
Sales Executive

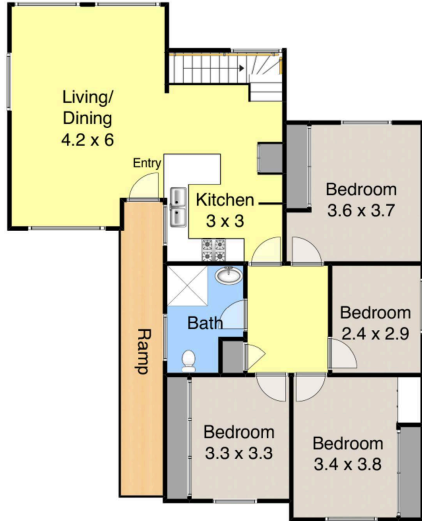
Laing+Simmons Newcastle Central
luke.searles@lsre.com.au
0438 420 449
02 4910 0692

Amenities

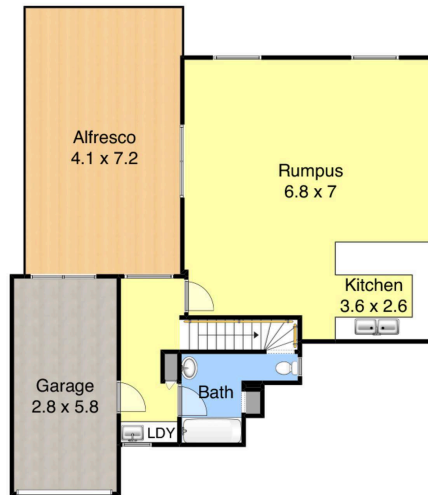
- Garage

- Single lock up garage with internal access
- Large, established backyard
- Popular location central to all services & amenities

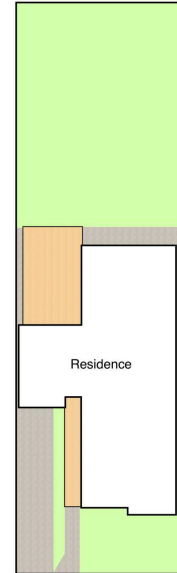
Laing+Simmons
Newcastle · Central



Street Level



Lower Level



Site Plan

16 Ridley Street,
Charlestown

Measurements are approximate and are to be used as a guide only

